

---

**EDUCATIONUSA HUNGARY NEWSLETTER - Issue 5/2018**

---

**Fulbright-EducationUSA** <educationusa@fulbright.hu>  
To: Fulbright EducationUSA <fulbright-educationusa@fulbright.hu>

Fri, Mar 23, 2018 at 2:21 PM



## EducationUSA Hungary NewsL: Issue 5/2018

### EducationUSA is on Youtube!

The process of applying to American universities can be complicated, but EducationUSA exists to smooth the way a little bit. This time of year, as students begin finding out their admissions decisions, we get a lot of questions about student visas. If you want to learn more about student visas in the U.S., keep reading this newsletter, and check out EdUSA's video on the subject, "[Traveling on a Student Visa](#)".



Congratulations to everyone that has been admitted so far!

---

## Upcoming Workshops

*Interested in studying in the United States?  
Prepare yourself by joining us **in our new location** for one of our informational workshops.  
Sharpen your essay skills in our Writing Workshop or prepare for the tests you may need to take to study in the U.S., such as the SAT or the TOEFL. Register for one or more today!*

- TOEFL Test Preparation and Study Skills  
Thursday, April 5th, 2:00-5:00 p.m.
- SAT Test Preparation and Study Skills  
Tuesday, April 10th, 2:30-4:00 p.m.
- GRE Test Preparation and Study Skills  
Thursday, April 12th, 2:30-4:00 p.m.
- Fulbright Application Pre-Writing Workshop  
Tuesday, April 24th, 2:30-4:00 p.m.

A full schedule is available on our [website](#). Registration is required. Email or call to register.



## Schools in Focus



### **Florida University of Technology**

Type: Medium-sized, 4-year private university

Location: Melbourne, FL

Enrollment: 3,635 undergraduates

International Scholarships: Scholarships available, but students must take SAT/ACT to be eligible.

Application Requirements: Official transcripts, essay, letters of recommendation.

Deadlines: Rolling admissions (no deadline)

For more information, click [here](#).



### **Montana State University**

Type: Medium-sized, 4-year public university.

Location: Bozeman, Montana

Enrollment: 14,725 undergraduates.

International Scholarships: Scholarships and fellowship [available](#) for both undergraduates and graduate students.

Application Requirements: Official transcripts, TOEFL/IELTS

Deadlines: July 1st

For more information, click [here](#).

### **Embry Riddle Aeronautical University**

Type: Medium-sized, 4-year private STEM



university.

Location: Worldwide (Online Program)

Enrollment: 5,729 undergraduates

International Scholarships: Available [here](#).

Application Requirements: Official transcripts, TOEFL 80+/IELTS 6+

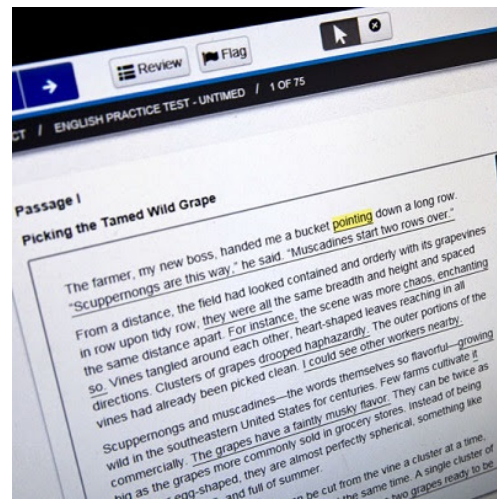
Deadlines:

For more information, click [here](#).

## News and Resources

### ACT Test to Become Computer-Based

The ACT, one of the most common standardized tests for university in the United States, is moving from a paper-based format to a computer-based one internationally. The computer-based test has been used domestically within the U.S. since 2015, and now overseas testing centers will begin to administer the new format as well. This change will take place as of the September 2018 test dates. The scoring, format, and difficulty of the test will not change. Find more information [here](#).



### Confused about visa types?

International students traveling to the U.S. for study or research usually enter the country using one of three visa types: F-1, J-1 or M-1. Not sure which visa you need? The Department of Homeland Security has put together a [helpful guide](#) to help you navigate the different visas and how to apply for them.



## Western Union Foundation Scholarship

The WU Scholars program provides scholarships to support students. Each recipient will receive USD \$2,500 to be used at any accredited American institution. Applicants must be pursuing a degree in STEM or business and must be between 18 and 26 years old. Find out more and apply [here](#).



*"Education is an ornament in prosperity  
and a refuge in adversity."*

- Aristotle



Tel.: (+36-1) 462-8050

Address: 1111 Budapest / Bertalan Lajos u. 2

E-mail: [educationusa@fulbright.hu](mailto:educationusa@fulbright.hu)

Website: [educationusa.hu](http://educationusa.hu)



Fulbright EducationUSA Advising Center  
Hungary-1111 Budapest, Bertalan Lajos utca 2.  
BME/MOME Building Z.  
9th Floor, Room 901-902.  
Tel: +36 1 462 8050  
E-mail: [educationusa@fulbright.hu](mailto:educationusa@fulbright.hu)  
Website: [www.fulbright.hu/educationusa](http://www.fulbright.hu/educationusa)

